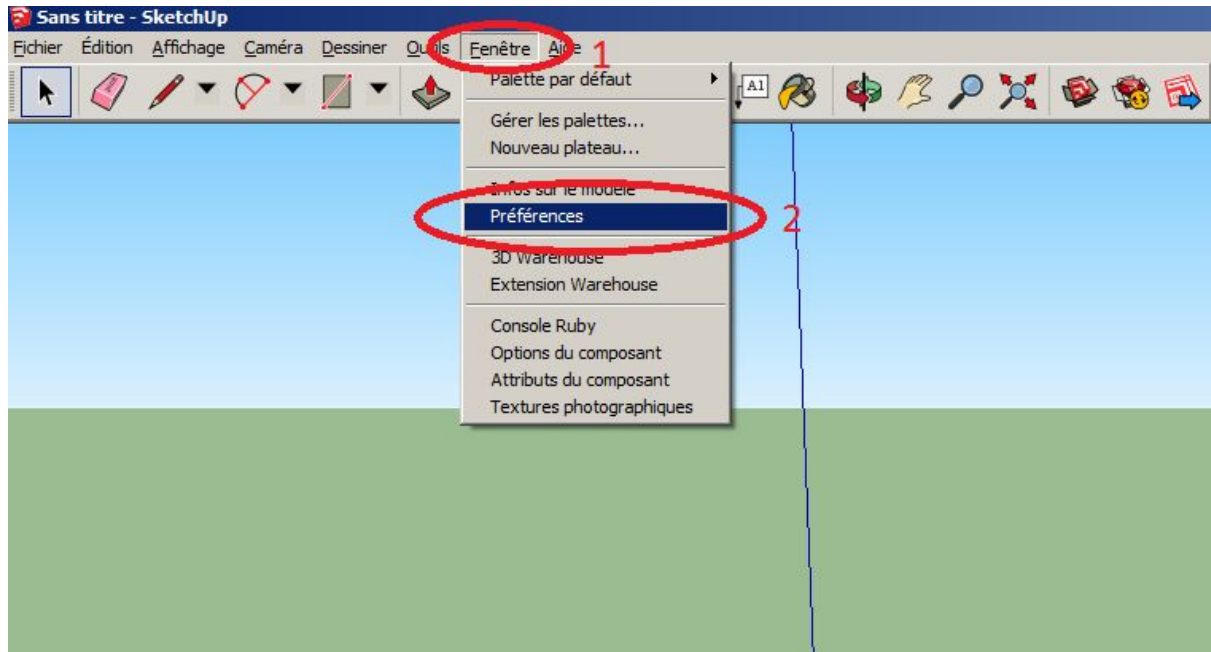


Ajout d'une extension sous Sketchup 2016

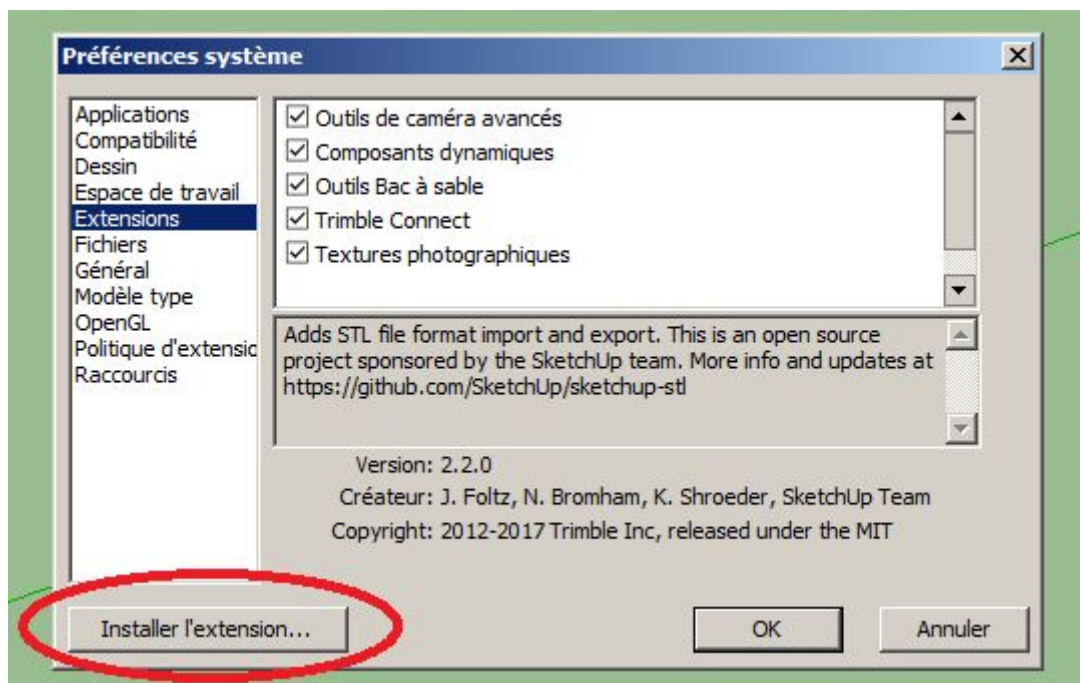
Lancer Sketchup 2016 depuis l'icône sur le bureau



Fenêtre > Préférences

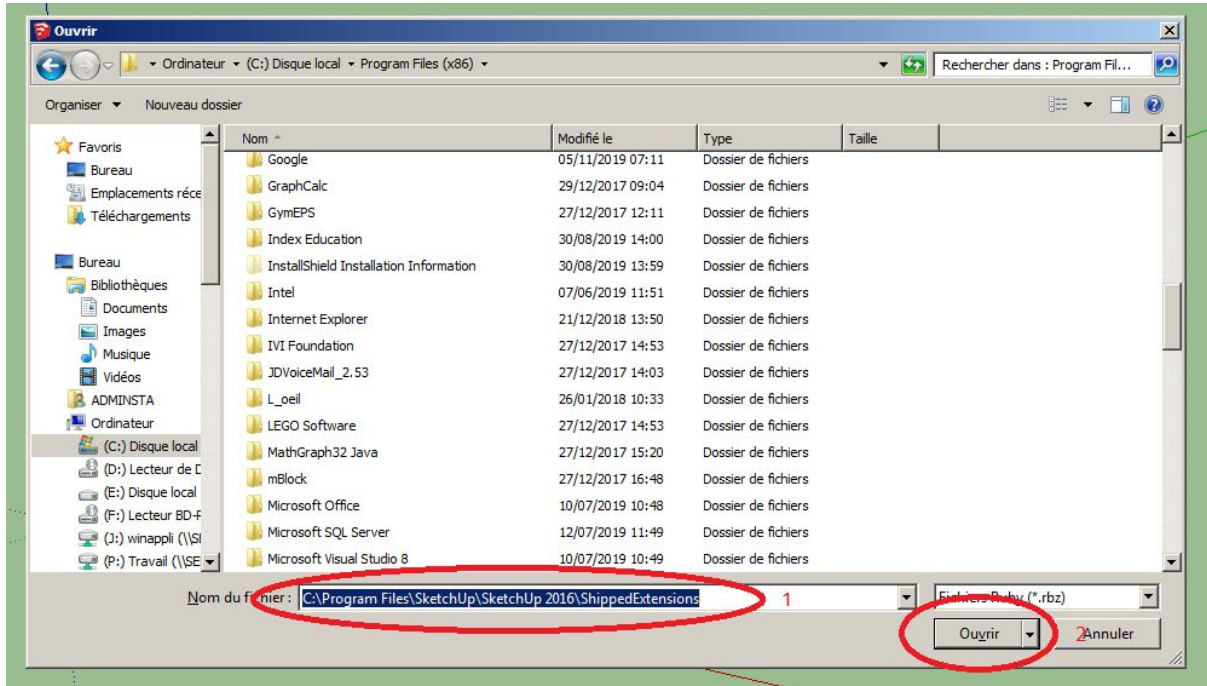


Clic gauche sur installer l'extension :

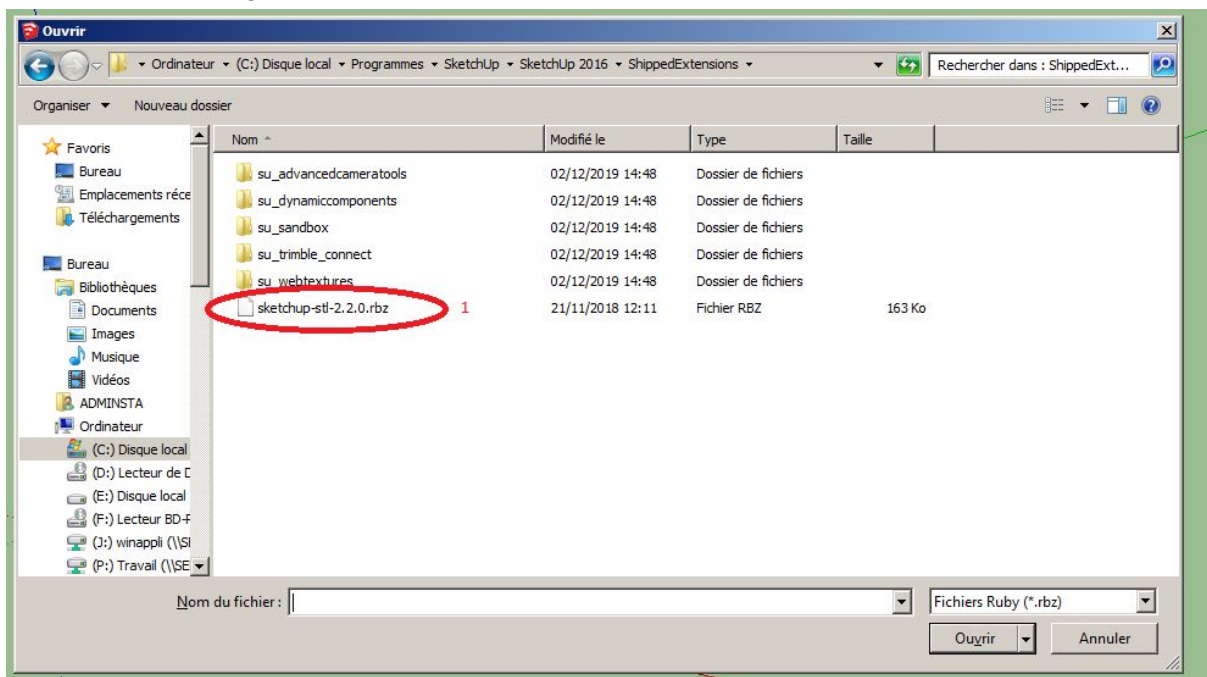


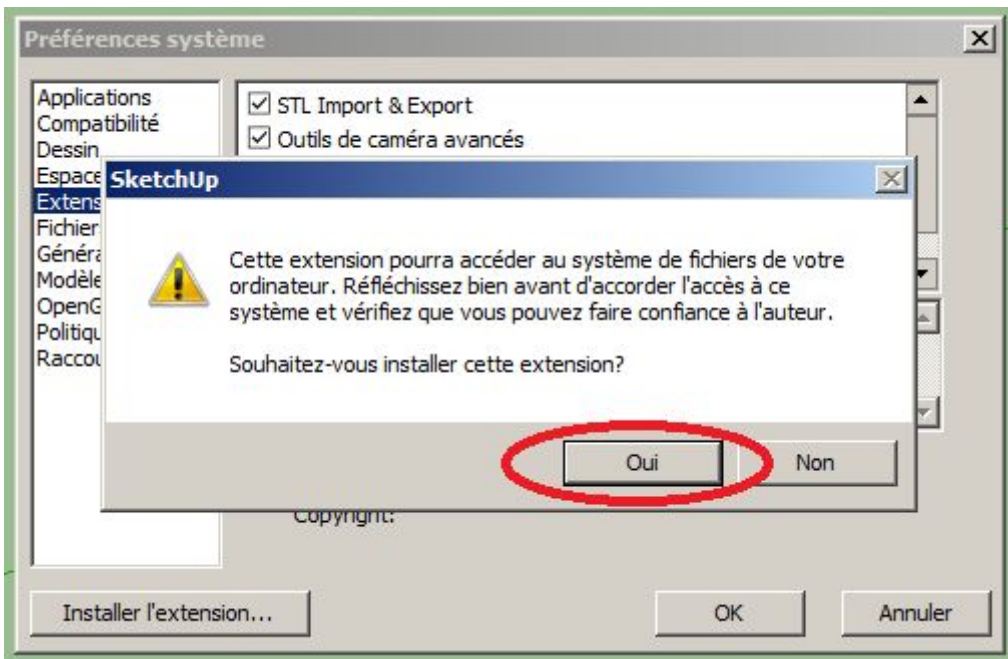
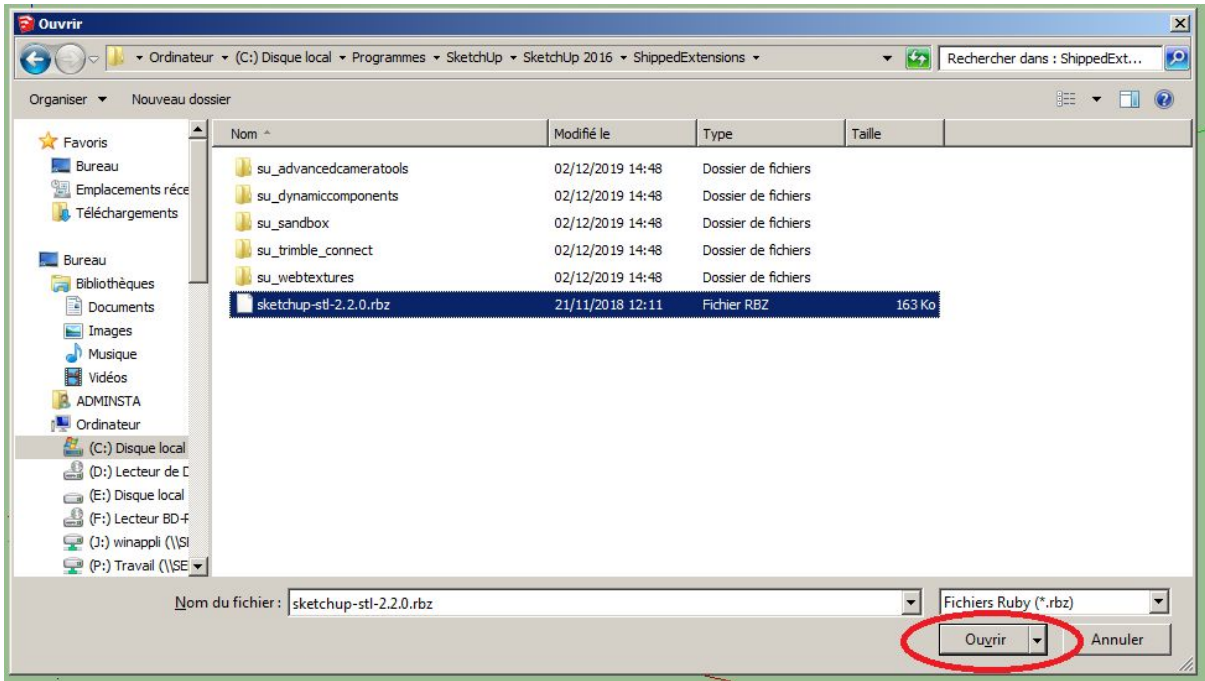
On va chercher le plugin sur le disque local dans le répertoire situé dans

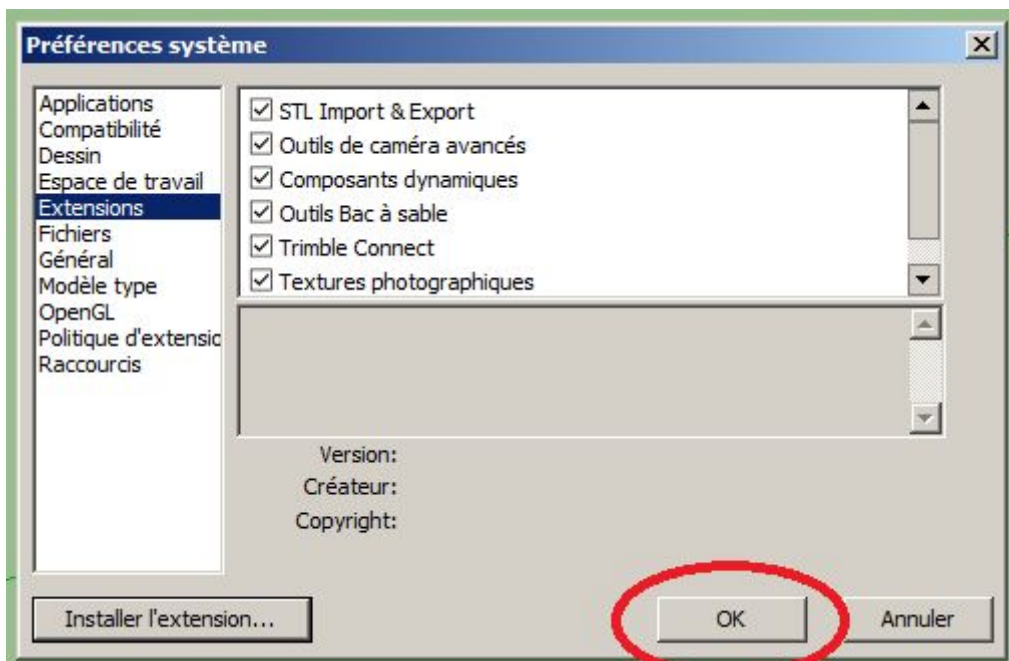
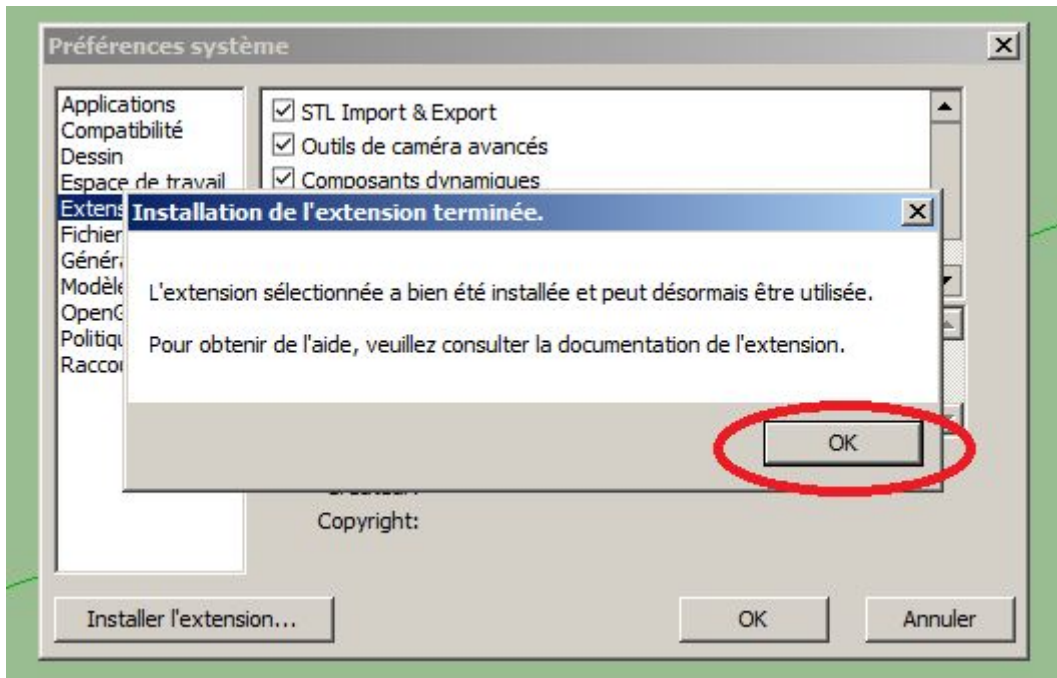
C:\Program Files\SketchUp\SketchUp 2016\ShippedExtensions



Sélectionner le plugin sketchup : **sketchup-stl-2.2.0.rbz**







STL Import et export et installé il faut redémarrer Sketchup.

